

Photo report

Creation of the access road to a wind farm by using NovoCrete®

- Location: Seewald/Germany
- Area: 10,000 m²
- Period of execution: October 2006
- Time needed: 5 days
- Cement: 180 kg/m³ with 2 % NovoCrete
- Milling depth: 35 cm

AUTARK Energy & Infrastructure Solutions GmbH & Co. KG

Brienner Str. 9, D-80333 München, Germany

Phone +49 (0) 89-290 97 286

Fax +49 (0) 89-290 97 446

www.autark-energy.com

moormann@autark-energy.com

Creation of a wind farm with NovoCrete®



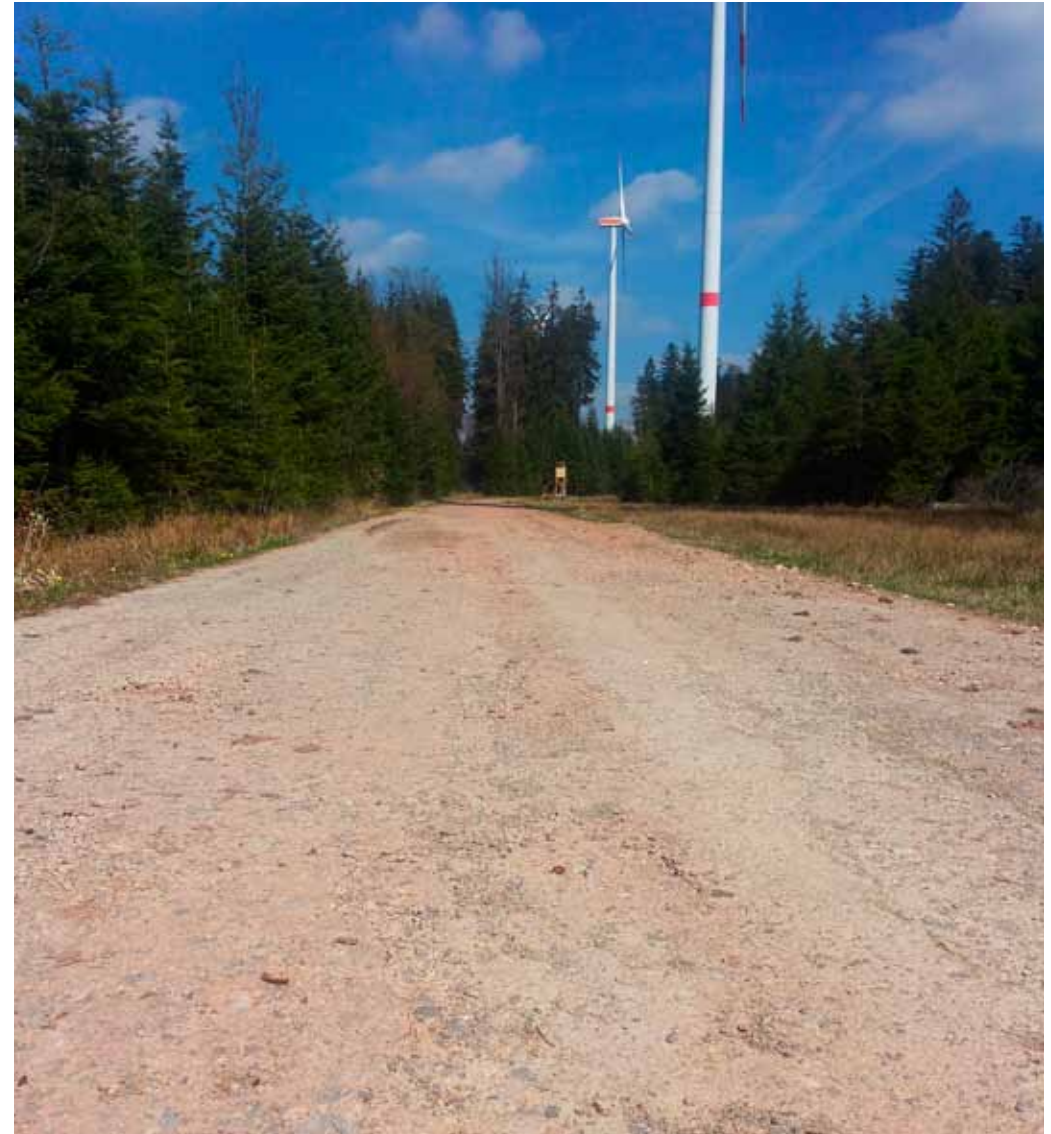
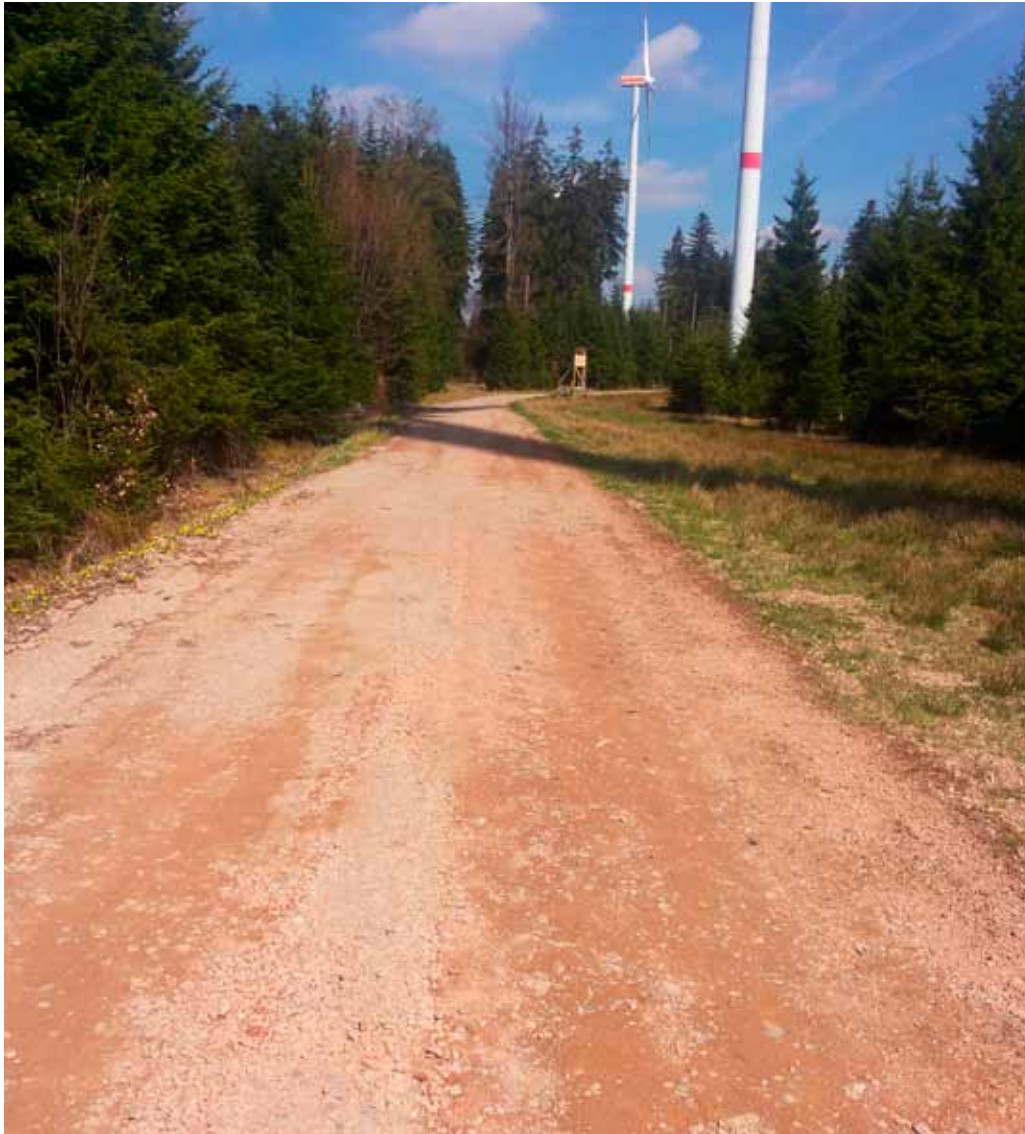
Photo report: Creation of a wind farm



Photo report: Creation of a wind farm



Photo report: Creation of a wind farm



Status after more than 7 years (with heavy truck traffic and several strong frost periods)

Photo report: Creation of a wind farm

page 5



Status after more than 7 years (with heavy truck traffic and several strong frost periods)